

natural stone

CATALOG V.2



 **manthei**
supply

natural stone

CATALOG V.2

contents

2	INSPIRATION
12	BUILDING STONE
14	SLABS PAVERS
20	STEPS STEPPING STONES
24	WALLS
29	ACCESSORIES
32	BENEFITS, CARE & INSTALLATION

CHARLEVOIX LOCATION

16188 Heise Rd, Charlevoix,
MI 49720

TRAVERSE CITY LOCATION

1423 Sawyer Rd, Traverse
City, MI 49685

MANTHEISUPPLY.COM

231-547-6595

sales@mantheisupply.com

two locations,
endless options

FULLY STOCKED YARDS
DESIGN CENTER
EXPERIENCED TEAM
NATURAL STONE
HIGH FORMAT®
UNILOCK®
MULCH, GRAVEL & MORE!



working with us

WHAT WE CAN DO FOR YOU

Manthei Supply's two full-service locations aim to give you a wide variety of relevant resources to help you design the perfect landscape project. We proudly service homeowners, landscape architects, contractors, masons and builders. Our large indoor and outdoor display spaces were installed for you to browse, touch and experience our unique selection of beautiful natural stone and manufactured hardscape materials. Expert staff can answer your questions about colors, shapes and textures. And we're eager to help you locate and reserve the perfect supplies for your outdoor oasis.

OUR PARTNERSHIPS - YOUR BENEFIT

We strive to provide you with the highest quality natural stone materials available anywhere. Strategic partnerships have been formed with the best stone quarries in the United States and around the world. These relationships ensure that you get the most beautiful and durable stone for your landscapes. When possible, we personally and regularly visit our partnering quarries to identify and purchase the most premium wall, step and patio materials. Many of our materials are co-developed with the quarries themselves, and are available exclusively to Manthei Supply. This helps us provide you materials with tighter control over dimensional tolerances, compressive strengths, absorption rates and slip coefficients.

BETTER TOGETHER

Manthei Supply is a proud part of the Manthei Group companies. We're a third generation family business with deep Northern Michigan roots. The group brings decades of service and expertise to the landscape industry, including a quarter-century of manufacturing and sales of retaining walls, steps and patio slabs on a global scale; in addition we are a local source for sand and aggregates. It's been our honor to serve Northern Michigan; and we humbly look forward to continuing to serve your needs for years to come.



INSPIRATION

GLACIER FRENCH PATTERN PAVER, Sandblasted Marble
GLACIER EASED EDGE COPING, Sandblasted Marble



STERLING FRENCH PATTERN PAVER, Antiqued Travertine



INSPIRATION

FOND DU LAC FLAGSTONE, Natural Cleft Limestone
NORTHPORT IRREGULAR STEPS, Natural Cleft Limestone



DEVON FRENCH PATTERN PAVER, Antiqued Travertine



INSPIRATION

AZURE FRENCH PATTERN PAVER, Antiqued Marble
AZURE EASED EDGE COPING, Sandblasted & Antiqued Marble
SILVERDALE LEDGESTONE, Building Stone Veneer





INSPIRATION

PEWTER PATTERN PAVER, Natural Cleft Sandstone



HURON GRAY OUTCROPPING, Guillotined Limestone
FULL COLOR BLUESTONE FLAGSTONE, Natural Cleft Sandstone



INSPIRATION

FOND DU LAC OUTCROPPING, Irregular Limestone
FOND DU LAC IRREGULAR STEPS, Natural Cleft Limestone



LARAMIE BROWN LEDGESTONE, Linear Sandstone
CHARCOAL FLAGSTONE, Natural Cleft Quartz



TOP PICKS

This catalog shows a small sampling of what we have to offer. Please inquire for additional options.

VENEER | BUILDING STONE

SILVERDALE, LEDGESTONE COLLECTION, Building Stone Veneer



BUILDING STONE VENEER



Aspen SM | Crestdale Collection
Chopped
Course Heights: 2"-6"
Product Percentage: 100% Seamface



Silverdale | Ledgestone Collection
Chopped Ledgestone
Course Heights: 1.5"-6"
Product Percentage: 80% Splitface / 20% Seamface



Concord M | Aurora Collection
Mosaic
Course Heights: Face size is ¼ sq ft to 2 sq ft
Product Percentage: 90% Splitface / 10% Bedface



Bluebell SF | Crestdale Collection
Chopped
Course Heights: 2"-4" or 4"-7" Rubble
Product Percentage: 100% Splitface



Prescott | Brookline Collection
Sawn
Course Heights: 4", 6", 8"
Product Percentage: 100% Bedface



Cheyenne | Highland Collection
Chopped
Course Heights: 4"-8"
Product Percentage: 100% Bedface



Leland SM Blend Tumbled | Springfield Collection
Chopped
Course Heights: 3"-6"
Product Percentage: 75% Splitface / 25% Seamface



Mapleton | Avalon Collection
Sawn
Course Heights: 4", 6", 8"
Product Percentage: 80% Splitface / 20% Bedface

TOP PICKS

This catalog shows a small sampling of what we have to offer. Please inquire for additional options.

SLABS | PAVERS

CEDAR BLEND PATTERN PAVER, Tumbled Natural Cleft Limestone



SQUARES & RECTANGLES



Silverek | French Pattern Paver
Antiqued Travertine
1.25" nominal thickness with tight joints
176 s.f. / crate



Fossil | French Pattern Paver
Antiqued Travertine
1.25" nominal thickness with tight joints
176 s.f. / crate



Sterling | French Pattern Paver
Antiqued Travertine
1.25" nominal thickness with tight joints
176 s.f. / crate



Sahara | French Pattern Paver
Antiqued Travertine
1.25" nominal thickness with tight joints
176 s.f. / crate



Champagne | French Pattern Paver
Antiqued Travertine
1.25" nominal thickness with tight joints
176 s.f. / crate



Devon | French Pattern Paver
Antiqued Travertine
1.25" nominal thickness with tight joints
176 s.f. / crate



Azure | French Pattern Paver
Antiqued Marble
1.25" nominal thickness with tight joints
176 s.f. / crate



Glacier | French Pattern Paver
Antiqued Marble
1.25" nominal thickness with tight joints
176 s.f. / crate

SQUARES & RECTANGLES



Onyx | Pattern Paver
Tumbled Thermal Granite
1"± thickness with tight joints
165 s.f. / pallet



Basalt | Pattern Paver
Tumbled Thermal Basalt
1"± thickness with tight joints
165 s.f. / pallet



Midnight Slate | Pattern Paver
Natural Cleft Slate
1.25"± thickness (nominal dimensions)
150 s.f. / pallet



Cedar Blend | Pattern Paver
Tumbled Natural Cleft Limestone
1"± thickness with tight joints
165 s.f. / pallet



Bellaire Blue | Pattern Paver
Tumbled Natural Cleft Limestone
1"± thickness with tight joints
165 s.f. / pallet



Huron Gray | Pattern Paver
Flamed Limestone
1.25"± thickness (nominal dimensions)
100 s.f. / pallet



Pewter | Pattern Paver
Tumbled Natural Cleft Sandstone
1"± thickness with tight joints
165 s.f. / pallet



Pewter | Pattern Paver
Tumbled Sandblasted Sandstone
1"± thickness with tight joints
165 s.f. / pallet

SQUARES & RECTANGLES



Full Color Bluestone | Flagstone Pattern Paver
Natural Cleft Sandstone
1.5"± thickness (nominal dimensions)
200 s.f. / pallet



Full Color Bluestone | Flagstone Pattern Paver
Thermal Sandstone
1.5"± thickness (nominal dimensions)
200 s.f. / pallet



Select Bluestone | Flagstone Pattern Paver
Natural Cleft Sandstone
1.5"± thickness (nominal dimensions)
200 s.f. / pallet



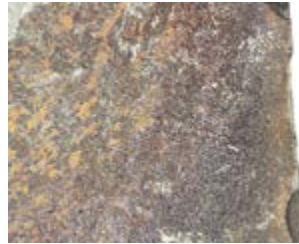
Select Bluestone | Flagstone Pattern Paver
Thermal Sandstone
1.5"± thickness (nominal dimensions)
200 s.f. / pallet

LAYDOWN FLAGSTONE

Note: Coverage is an estimate and will vary by density and thickness.



Laramie Gray Select | Laydown Flagstone
Natural Cleft Sandstone
Irregular, 1"-2"± thickness
100 s.f. / ton (approximate coverage)
Sold by the ton
Also available in 2"-3"; 3'-4", or 3"+ thickness



Laramie Brown | Laydown Flagstone
Natural Cleft Sandstone
Irregular, 2"-3"± thickness
65 s.f. / ton (approximate coverage)
Sold by the ton



Fond Du Lac Select | Large Laydown Flagstone
Natural Cleft Limestone
Irregular, 1.25"-2"± thickness
95 s.f. / ton (approximate coverage)
Sold by the ton
Also available in 2"-2½" thickness

STANDUP FLAGSTONE

Note: Coverage is an estimate and will vary by density and thickness



Full Color Bluestone | Standup Flagstone
Natural Cleft Sandstone
Irregular, 1.5"± thickness
100 s.f. / ton (approximate coverage)
Sold by the ton



Full Color Bluestone | Standup Flagstone
Thermal Sandstone
Irregular, 1.5"± thickness
100 s.f. / ton (approximate coverage)
Sold by the ton



Select Bluestone | Standup Flagstone
Natural Cleft Sandstone
Irregular, 1.5"± thickness
100 s.f. / ton (approximate coverage)
Sold by the ton



Laramie Gray Select | Standup Flagstone
Natural Cleft Sandstone
Irregular, 1"-2"± thickness
100 s.f. / ton (approximate coverage)
Sold by the ton



Charcoal | Standup Flagstone
Natural Cleft Quartz
Irregular, 1.5"-2"± thickness
88 s.f. / ton (approximate coverage)
Sold by the ton



Silver | Standup Flagstone
Natural Cleft Quartz
Irregular, 1.5"-2"± thickness
88 s.f. / ton (approximate coverage)
Sold by the ton



Gold | Standup Flagstone
Natural Cleft Quartz
Irregular, 1.5"-2"± thickness
88 s.f. / ton (approximate coverage)
Sold by the ton



Chilton | Standup Flagstone
Natural Cleft Limestone
Irregular, 2"-2.5" ± thickness
70 s.f. / ton (approximate coverage)
Sold by the ton

FLAGSTONE STEPPERS

Note: Coverage is an estimate and will vary by density and thickness.



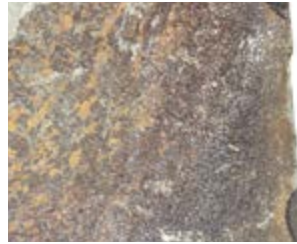
Full Color Bluestone | Flagstone Steppers
Natural Cleft Sandstone
Irregular, 1.5"± thickness
100 s.f. / ton (approximate coverage)
Sold by the ton



Fond Du Lac Select | Flagstone Steppers
Natural Cleft Limestone
Irregular, 1"-2"± thickness
100 s.f. / ton (approximate coverage)
Sold by the ton



Laramie Gray Select | Flagstone Steppers
Natural Cleft Sandstone
Irregular, 1"-1.75"± thickness
100 s.f./ton (approximate coverage)
Sold by the ton



Laramie Brown | Flagstone Steppers
Natural Cleft Sandstone
Irregular, 1"-1.75"± thickness
100 s.f./ton (approximate coverage)
Sold by the ton



Charcoal | Flagstone Steppers
Natural Cleft Quartz
Irregular, 1.5"-2"± thickness
88 s.f. / ton (approximate coverage)
Sold by the ton



Silver | Flagstone Steppers
Natural Cleft Quartz
Irregular, 1.5"-2"± thickness
88 s.f. / ton (approximate coverage)
Sold by the ton



Gold | Flagstone Steppers
Natural Cleft Quartz
Irregular, 1.5"-2"± thickness
88 s.f. / ton (approximate coverage)
Sold by the ton



Chilton | Flagstone Steppers
Natural Cleft Limestone
Irregular, 2"-2.5" ± thickness
70 s.f. / ton (approximate coverage)
Sold by the ton

TOP PICKS

This catalog shows a small sampling of what we have to offer. Please inquire for additional options.

STEPS

ONYX DIMENSIONAL STEPS, Thermal Granite



IRREGULAR STEPS



Full Color Bluestone | Irregular Step
 Natural Cleft Sandstone
 4"-8" thick (nominal size)
 Sold by the ton



Fond Du Lac Select | Irregular Step
 Natural Cleft Limestone
 5"-7" thick, 2'-5' long (nominal size)
 Sold by the ton



Laramie Gray Select | Irregular Step
 Natural Cleft Sandstone
 5"-7" thick (nominal size)
 Sold by the ton



Laramie Brown Select | Irregular Step
 Natural Cleft Sandstone
 5"-8" thick (nominal size)
 Sold by the ton



Chilton | Irregular Step
 Natural Cleft Limestone
 5"-8" thick (nominal size)
 Sold by the ton



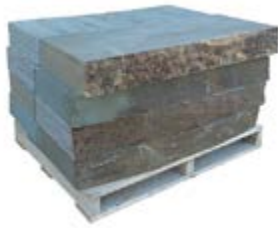
Canyon Gray | Irregular Step
 Natural Cleft Limestone
 3'-4', 7" thickness
 4'-5', 7" thickness
 5'-6', 7" thickness
 Dimensions are approximate, sold by the ton



Superior | Irregular Step
 Natural Cleft Limestone
 4'-5' long, 18"-20" depth, 5"-6" thick (nominal size)
 Sold by the ton

steps

DIMENSIONAL STEPS



Full Color Bluestone Live Edge | Dimensional Step
Thermal Top and Two Sides, One Long Live Edge Sandstone
48" x 18" x 6" 500± lbs/piece
Call for additional sizes
Sold by the piece



Select Bluestone | Dimensional Step
Thermal Top and Three Sides Sandstone
48" x 18" x 6" 500± lbs/piece
Call for additional sizes
Sold by the piece



Laramie Gray | Dimensional Step
Natural Cleft Top, Snapped on Four Sides Sandstone
36" x 18" x 5-7" 406± lbs/piece
48" x 18" x 5-7" 542± lbs/piece
60" x 18" x 5-7" 650± lbs/piece
72" x 18" x 5-7" 758± lbs/piece
Sold by the piece



Huron Gray | Dimensional Step
Thermal Top, Rockfaced on Three Sides Limestone
48" x 18" x 6" 500± lbs/piece
60" x 18" x 6" 625± lbs/piece
72" x 18" x 6" 750± lbs/piece
Sold by the piece



Pewter | Dimensional Step
Natural Cleft Top, Rockfaced on Three Sides Sandstone
48" x 18" x 6" 504± lbs/piece
72" x 18" x 6" 756± lbs/piece
96" x 18" x 6" 1008± lbs/piece
Sold by the piece



Platinum | Dimensional Step
Sawn Top, Snapped on Four Sides Limestone
48" x 18" x 6" 525± lbs/piece
60" x 18" x 6" 825± lbs/piece
Sold by the piece



Chilton | Dimensional Step
Natural Cleft Top, Snapped on Four Sides Limestone
36" x 18" x 6" 440± lbs/piece
48" x 18" x 6" 560± lbs/piece
60" x 18" x 6" 650± lbs/piece
Sold by the piece



Bayport | Dimensional Step
Sawn Top, Snapped on Four Sides Limestone
48" x 16" x 6" 455± lbs/piece
Sold by the piece

DIMENSIONAL STEPS



Onyx | Dimensional Step
 Thermal Top, Snapped Four Sides Granite

36" x 18" x 6"	405± lbs/piece
48" x 18" x 6"	540± lbs/piece
60" x 18" x 6"	675± lbs/piece
72" x 18" x 6"	810± lbs/piece

Sold by the piece



Onyx | Dimensional Step
 Thermal Top, One Long Edge and Two Short Sides Granite

36" x 18" x 6"	405± lbs/piece
48" x 18" x 6"	540± lbs/piece
60" x 18" x 6"	675± lbs/piece

Sold by the piece



Basalt | Dimensional Step
 Thermal Top, Rockfaced on Three Sides Basalt

48" x 18" x 6"	555± lbs/piece
72" x 18" x 6"	830± lbs/piece
96" x 18" x 6"	1,110± lbs/piece

Sold by the piece or pallet



Fond Du Lac Select | Dimensional Step
 Natural Cleft Top, Snapped Four Sides Limestone

48" x 18", 5"-7" thick	500± lbs/piece
------------------------	----------------

Sold by the piece

steps

TOP PICKS

This catalog shows a small sampling of what we have to offer. Please inquire for additional options.

WALLS

FULL COLOR BLUESTONE SAWN WALL, Snapped Sandstone

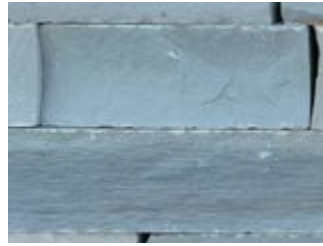


SAWN WALLS

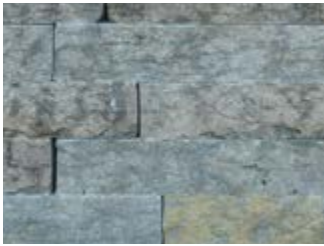
Note: Coverage is an estimate and will vary by density and thickness.



Full Color Bluestone | 2 1/4"/6" Sawn Wall
 Snapped Sandstone
 2 1/4"/6" high x 8" deep x random lengths
 18-20 face feet/ ton (approximate coverage)
 Sold by the ton



Full Color Bluestone | 6" Sawn Wall
 Snapped Sandstone
 6" high x 8" deep x random lengths
 18-20 face feet/ ton (approximate coverage)
 Sold by the ton



Huron Gray | 3" Sawn Wall
 Snapped Limestone
 3" high x 8" deep x random lengths 18-20 face feet/ ton (approx.)
 3" high x 10" deep x random lengths 14-16 face feet/ ton (approx.)
 Sold by the ton



Huron Gray | 6" Sawn Wall
 Snapped Limestone
 6" high x 8" deep x random lengths
 18-20 face feet/ ton (approximate coverage)
 Sold by the ton



Huron Gray | 6" Tumbled Sawn Wall
 Snapped Limestone
 6" high x 8" deep x random lengths
 18-20 face feet/ ton (approximate coverage)
 Sold by the ton



Huron Blend | 6" Sawn Wall
 Snapped Limestone
 6" high x 8" deep x random lengths
 18-20 face feet/ ton (approximate coverage)
 Sold by the ton



Hartford | 6" Sawn Wall
 Snapped Limestone
 6" high x 8" deep x random lengths
 18-20 face feet/ton (approximate coverage)
 Sold by the ton



Ashton | 6" Sawn Wall
 Snapped Limestone
 6" high x 8" deep x random lengths
 18-20 face feet/ton (approximate coverage)
 Sold by the ton

SAWN WALLS

Note: Coverage is an estimate and will vary by density and thickness



Onyx | 4" Sawn Wall
 Snapped Granite
 4" high x 8" deep x random lengths
 16-18 face feet/ ton (approximate coverage)
 Sold by the ton



Onyx | 6" Sawn Wall
 Snapped Granite
 6" high x 8" deep x random lengths
 16-18 face feet/ ton (approximate coverage)
 Sold by the ton



Platinum | 6" Sawn Wall
 Snapped Limestone
 6" high x 8" deep x random lengths
 18-20 face feet/ ton (approximate coverage)
 Sold by the ton

NATURAL BED WALLS



Fond Du Lac Silver | 3"-4" Wall
 Natural Cleft Top, Snapped Limestone
 3"-4" high x 8" deep x random lengths
 18-20 face feet/ ton (approximate coverage)
 Sold by the ton



Chilton | 3"-4" Wall
 Natural Cleft Top, Snapped Limestone
 3"-4" high x 8" deep x random lengths
 18-20 face feet/ ton (approximate coverage)
 Sold by the ton

LARGE NATURAL BED WALLS



Bayport | Sawn Wall
 Bedface Limestone
 Available in 6", 12" or 24" high
 13-14" deep x 3'-8' long
 7.5 face feet/ ton (approximate coverage)
 Sold by the ton



Huron Gray | Sawn Wall
 Bedface Limestone
 Available in 6", 12" or 24" high
 10-12" deep x 3'-8' long
 12 face feet/ ton (approximate coverage)
 Sold by the ton
 (Note: color based on orientation of stone)

LEDGE WALLS

Note: Coverage is an estimate and will vary by density and thickness.



Laramie Brown | Ledge Stone
Linear Sandstone
14" high x 14"-30" deep x 4'-10' long
6-8 face feet/ ton (approximate coverage)
Sold by the ton



Laramie Brown | Ledge Stone
Linear Sandstone
9" high x 12"-18" deep x 3'-7' long
8-12 face feet/ ton (approximate coverage)
Sold by the ton



Laramie Gray | Ledge Stone
Linear Sandstone
9" high x 12"-18" deep x 3'-7' long
8-12 face feet/ ton (approximate coverage)
Sold by the ton

GUILLOTINED WALLS



Bayport | 14" Guillotined Wall
Snapped Limestone
14"± milled thickness, 18"-24" deep, 3'-8' long
6-8 face feet/ ton (approximate coverage)
Sold by the ton



Superior | 10"-12" Guillotined Wall
Snapped Limestone
10"-12" thick, 12" deep, 3'-5' deep
12 face feet/ ton (approximate coverage)
Sold by the ton



Huron Gray | 10"-12" Guillotined Wall
Snapped Limestone
10"-12" thick, 12" deep, 3'-5' deep
12 face feet/ ton (approximate coverage)
Sold by the ton

OUTCROPPING WALLS

Note: Coverage is an estimate and will vary by density and thickness



Fond Du Lac Silver | Outcropping
Irregular Limestone
Available in 5"-8" high or 8"-12" high (approximate)
4-6 face feet/ ton (approximate coverage)
Sold by the ton



Chilton | Outcropping
Irregular, Weather Edge Limestone
Available in 5"-8" high or 8"-12" high (approximate)
4-6 face feet/ ton (approximate coverage)
Sold by the ton



Canyon Gray | Outcropping
Irregular Limestone
Available in 7", 9", 11" or 25" high (approximate)
4-6 face feet/ ton (approximate coverage)
Sold by the ton



Ironton Gray | Outcropping
Irregular Limestone
8"-10" or 26"-28" high (approximate)
4-6 face feet/ ton (approximate coverage)
Sold by the ton



Superior | Outcropping
Irregular Limestone
Available in 10"-12", 15"-16" or 18"-20" high (approximate)
4-6 face feet/ ton (approximate coverage)
Sold by the ton



Huron Gray | Outcropping
Irregular Limestone
Available in 10", 12" or 16" high (approximate)
4-6 face feet/ ton (approximate coverage)
Sold by the ton



Laramie Gray Select | Outcropping
Irregular Sandstone
Call for currently available thickness ranges
4-6 face feet/ ton (approximate coverage)
Sold by the ton



Fieldstone Moss | Boulder
Sold by the ton

COPING & TREADS



Onyx | Eased Edge Coping
Thermal Top, Eased Edge on Two Sides Tumbled Granite
12" x 24" x 2"



Onyx | Rockfaced Coping
Thermal Top, Rockfaced on Two Sides Tumbled Granite
12" x 24" x 2"



Basalt | Eased Edge Coping
Thermal Top, Eased Edge on Two Sides Tumbled Basalt
12" x 24" x 2"



Basalt | Rockfaced Coping
Thermal Top, Rockfaced on Two Sides Tumbled Basalt
12" x 24" x 2"



Basalt | Rockfaced Coping
Thermal Top, Rockfaced on Two Sides Basalt
12" x 48" x 2"
12" x 72" x 2"



Pewter | Eased Edge Coping
Natural Cleft Top, Eased Edge on Two Sides Tumbled Sandstone
12" x 24" x 2"

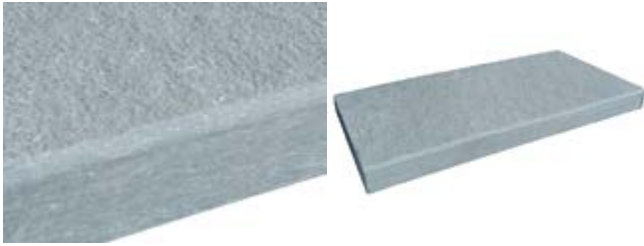


Pewter | Rockfaced Coping
Natural Cleft Top, Rockfaced on Two Sides Tumbled Sandstone
12" x 24" x 2"



Pewter | Rockfaced Coping
Natural Cleft Top, Rockfaced on Two Sides Sandstone
12" x 48" x 2"
12" x 72" x 2"

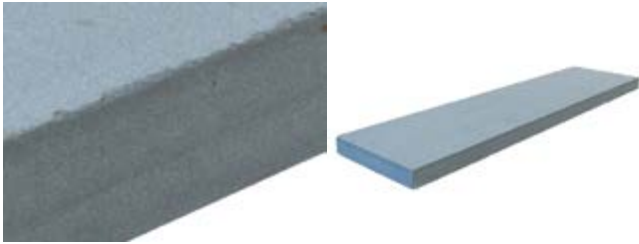
COPING & TREADS



Bellaire Blue | Eased Edge Coping
Natural Cleft Top, Eased Edge on Two Sides Tumbled Limestone
12" x 24" x 2"



Bellaire Blue | Rockfaced Coping
Natural Cleft Top, Rockfaced on Two Sides Tumbled Limestone
12" x 24" x 2"



Select Bluestone | Eased Edge Coping
Thermal Top and One Long Sides Sandstone
48" x 12" x 2"

EDGING



Superior | Edging
Linear Limestone
4" x 4" x random
100 linear feet/ ton (approximate coverage)



Laramie Brown | Tumbled Edging
Linear Sandstone
4" x 4" x 10"
4" x 4" x random
100 linear feet/ ton (approximate coverage)



Laramie Gray | Tumbled Edging
Linear Sandstone
4" x 4" x 10"
4" x 4" x random
100 linear feet/ ton (approximate coverage)

STEPPING STONES



Midnight Slate | Stepping Stones
Natural Cleft Slate
Irregular
18"-24", 1"-1.25" thick
Sold by the piece, 50 units per pallet

Basalt | Stepping Stones
Thermal Basalt
Irregular
Random Sizes, 1.25"± thick
Sold by the piece

DECORATIVE STONE



Verde | Decorative Stones
7/8"-1 1/2" (approximate dimensions)
Super Sack



Midnight Slate | Decorative Stone
L-5 Slate 3/4"-1 1/2"
L-57 Slate 1/2"-1"
L-8 Slate 3/16"-1/2"
L-9 Slate 1/8"-3/8"
Slate Sand 1/8" and Smaller
Super Sack



White | Decorative Pebbles
1"-3" (approximate dimensions)
30 lb bag



Black | Decorative Pebbles
1"-3" (approximate dimensions)
30 lb bag



BENEFITS & CARING FOR NATURAL STONE

BENEFITS OF FABRICATED NATURAL STONE

Our team has worked hard to source some of the most beautiful natural stone in the world. The fabricators we have partnered with select dense blocks of stone, saw them to thickness, chop or cut them to size and apply a surface or edge texture if needed. Fabricated stone has tighter tolerances and dimensions, custom surface and edge finishes, less waste and is typically easier to install. Please keep in mind that slight thickness and dimension variations can occur during the fabrication process and should be expected. Below are a few examples of fabricated products we stock. We look forward to helping you incorporate these beautiful products into your next project!

SLABS/PAVERS

Precise dimensions allow these pavers to fit tight together eliminating the need for joint sand in most cases. Thinner pavers are easier to lift and carry, making them favorable with installers. Available finishes include antiqued, sandblasted, thermal and natural cleft. The unique movement and color of each natural stone piece creates a one-of-a-kind project every time.

SAWN WALLS

Sawn heights allow for a clean look and faster installation with less waste. Snapped depths allow for an average coverage of 18-20 face feet per ton. These versatile wall options are great for seat walls, small retaining walls, grill islands, fire pits, step risers and more.

DIMENSIONAL STEPS

Sawn 6" heights allow for a consistent rise on your next step project. Available sizes range from 3'-8' long and 18" deep. Face textures are available in snapped, rockfaced, thermal and live edge.

THERMAL STANDUP FLAGSTONE

Full Color Bluestone is available in 1.5" or 2" standup flagstone. The consistent thickness makes this much faster to install and the thermal surface is stunning.

CAPS AND COPING

Our fabricated caps and coping are the perfect way to finish your amazing project, and are available in several colors. Edge profiles are available in eased edge, bullnose and splitface. Surface textures are available in antiqued, sandblasted, thermal and natural cleft.

CARE & INSTALLATION

PRODUCT VARIATION

Natural stone is a product of nature. Surface texture and color will vary piece to piece and crate to crate. Our partnering quarries work hard to ship consistent, high quality products, but you should expect variation. Samples are suggested, but will not guarantee color. We highly recommend all material be delivered prior to installation and that available material is blended throughout your project. Each installation will be uniquely different and perfectly created in nature!

NORMAL MAINTENANCE AND CARE

As with any product that is continually exposed to the natural environment, cleaning and care may be desired over time to maintain the appearance of your hardscapes. Generous rinsing with water and light scrubbing with a stiff, plastic bristle brush is generally the best way to remove dirt that has accumulated over time. Cleaners and mild detergent designed to be used on stone products may be used as well. Always follow all manufacturer instructions and test on a small area when using any cleaner. Power washers may cause damage at close range.

WINTER CARE

All metal snow shovels and snow blower blades have the potential to damage stone surfaces. All snowplows, snow blowers and shovels used to clear products of snow should use plastic blades or guards.

POLYMERIC HAZE

Improper installation of ancillary polymeric sand products may result in the presence of polymeric haze. This discoloration can potentially mute the vibrant colors of products. Hazing is not indicative of the quality of the stone product, and should not be considered a source of concern for the product's durability.

MANTHEI SUPPLY RETURN POLICY

Manthei Supply will only accept returns of unopened, full pallets of HIGH FORMAT® and Unilock® products. With the exclusion of HIGH FORMAT® steps, we will no longer accept returns of partial pallets, layers and sections. All special order sales are final. All natural stone sales are final. Returns must be made within 60 days of pick up / delivery. Your copy of our invoice must accompany all returns. We assess a 10% restocking fee. We reserve the right to refuse any return. There will be no cash refunds.

MANTHEI SUPPLY WARRANTY ON MATERIALS

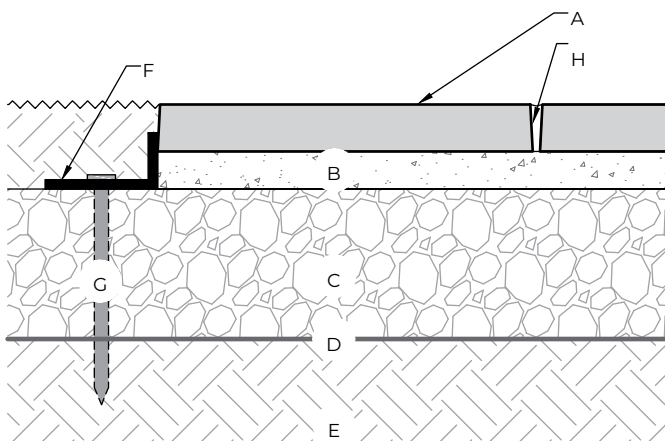
Material warranty details vary based on the specific product being purchased. Warranty information from each manufacturer can be found on their individual websites. Natural stone products do not include a warranty since they are naturally occurring materials and are therefore sold "as-is".

TYPICAL INSTALLATION DETAILS

This page shows typical installations for pavers and steps.

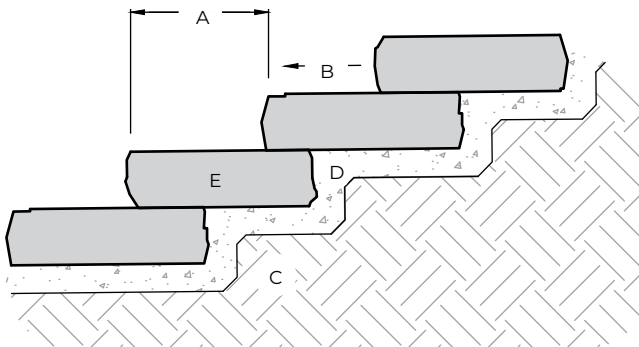
- Drawings are for preliminary reference only (not for final construction).
- Final designs for construction **must be prepared by a registered professional engineer** using the actual conditions of the proposed site and loads.
- Block size and placement shown are for reference only, individual blocks vary with installation pattern.
- Section shown is the minimum recommendation for pedestrian loading. Projects with heavier traffic or sites with poor soil conditions may require thicker gravel base, concrete curb edge restraint, and/or sand subbase.
- Provide adequate surface drainage to prevent ponded water.

TYPICAL RESIDENTIAL PEDESTRIAN INSTALLATION



- A. Natural stone pavers, thickness varies
- B. 1" screed clean angular stone, 1/8" to 1/4"
- C. 6" of 3/4" clean stone, compacted in 3-4" lifts
- D. Woven geotextile fabric (recommended)
- E. Compacted subgrade soil
- F. Low profile paver edge restraint
- G. Steel spike
- H. Optional joint sand (ASTM C144)

TYPICAL STEP INSTALLATION DETAIL



- A. Tread width varies (12" or more is desirable)
- B. Slope 1-2% (to allow drainage)
- C. Compact subbase material to a minimum of 95% max. dry density (or as specified by Engineer)
- D. Free-draining granular material (3" thick minimum compact to a min. of 95% max. dry density)
- E. Step block



STONE YARD & DESIGN SHOWROOM

CHARLEVOIX LOCATION

16188 Heise Rd, Charlevoix, MI 49720

TRAVERSE CITY LOCATION

1423 Sawyer Rd, Traverse City, MI 49685

MANTHEISUPPLY.COM

231-547-6595

sales@mantheisupply.com

YOUR SOURCE FOR LANDSCAPE PRODUCTS IN NORTHERN MICHIGAN